

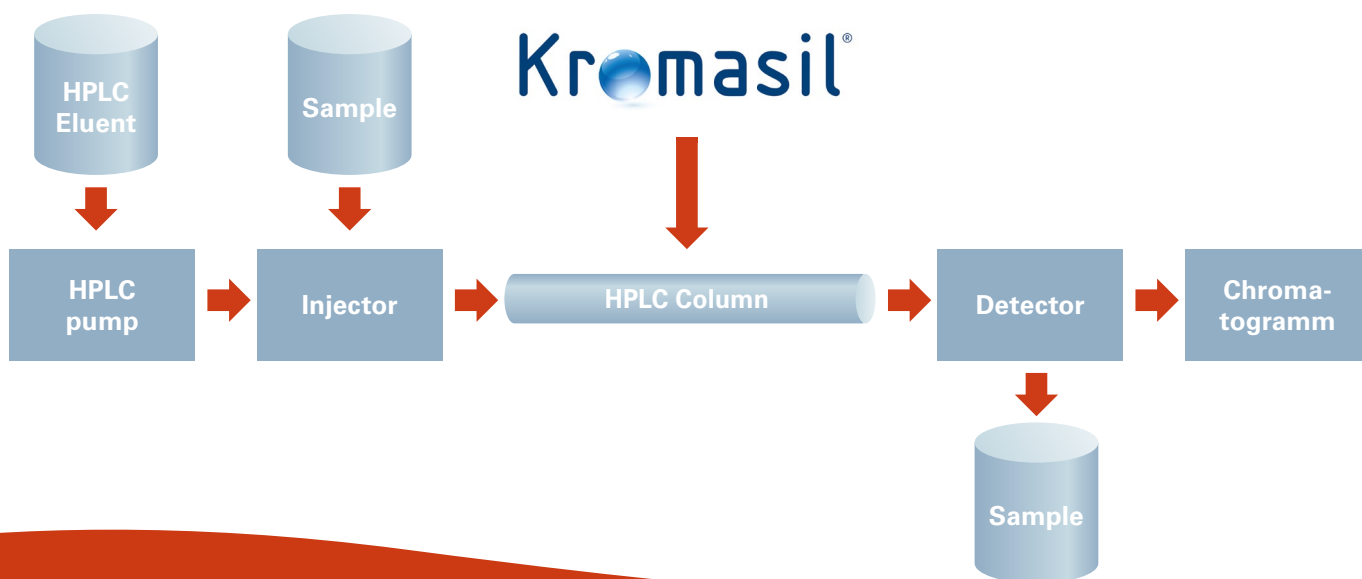


Kromasil® by Nouryon has over 30 years experience in HPLC. It is a totally porous spherical silica particle used for chromatography processes with the aim to offer you the highest quality while at the same time reducing your production costs.

What is HPLC and what is it used for?

High Performance Liquid Chromatography is an important separation technique in the pharmaceutical industry. It allows the identification as well as the separation and purification of mixtures. Chromatography can be used for analytical purposes such as quality control of pharma ingredients or preparative purposes.

One important application of the technology is the purification process of peptides such as GLP-1-agonists. Over the last years, these substances have gained importance in the treatment of Diabetes Type II.



Subscribe to our newsletter and receive regular updates on products innovations and news from the pharma industry.

Contact us! Feel free to reach out at healthcare@biesterfeld.com for more information

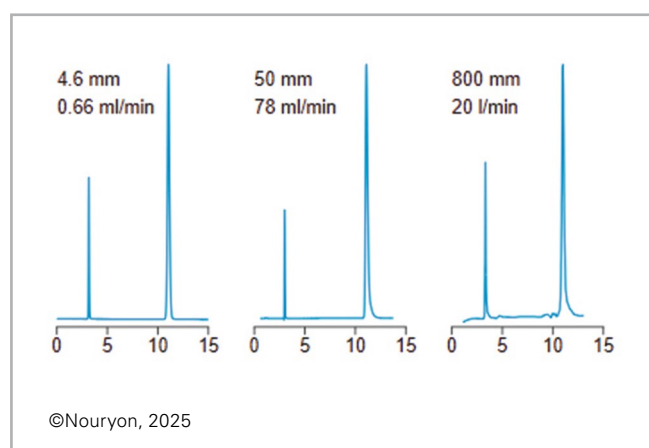
Why Kromasil®?

- ✓ mechanical and chemical stability
- ✓ long product life time
- ✓ high available surface area
- ✓ better resolution

The advantages of using HPLC with **Kromasil®** chromatography media for industrial-scale operations are numerous and compelling, making it a go-to method for many industries, especially pharmaceutical industry requiring high levels of purity.

We offer **Kromasil®** in Columns and Bulk.

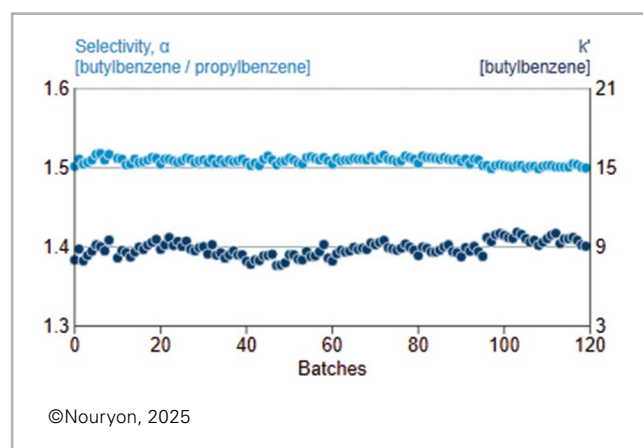
Injection on Kromasil® C18 column with internal diam. from 4.6 to 800 mm



Kromasil's® HPLC medias high throughput and efficiency enable fast processing of large material volumes, crucial for industrial-scale production without compromising separation quality. Additionally, prep HPLC offers smooth scalability, allowing methods developed on a smaller scale to be easily scaled up for full production, with consistent results across different particle sizes



Selectivity and retention factors for 120 batches of Kromasil® C18



HPLC offers high consistency and reproducibility, which is essential for regulated industries like pharmaceuticals. Kromasil® stationary phases have demonstrated excellent batch-to-batch consistency over the years.

Disclaimer:

Our advice, information or recommendations regarding application shall be provided to the best of our knowledge. As the actual application is beyond our scope of influence, and as the circumstances of such application are not completely foreseeable, written and verbal indications, suggestions etc. can only be provided on a non-binding basis.